



BLACK SANDS

INVESTMENTS

COMPANY PROFILE

About Us

Black Sands Investments (BSI) is a premier, industrial consortium headquartered in Saudi Arabia, engineered to power the most critical infrastructures of the GCC. We operate as an integrated ecosystem across Energy & Petrochemicals, Multidisciplinary EPC, Industry Technologies, and Logistics.

Our operational scope covers the full project lifecycle, from initial engineering and industrial manufacturing to technology integration and site support. This diverse portfolio enables BSI to act as a strategic partner for the Kingdom's major government and private sector entities, and by aligning global industrial standards with deep local market knowledge, BSI provides the technical and logistical framework necessary for complex regional developments. We are dedicated to creating long-term value and supporting the industrial localization goals of Saudi Vision 2030, ensuring reliable growth across the GCC's energy and technology landscapes.

Our Vision

To be the premier industrial partner in the GCC, recognized for driving innovation and operational excellence across the Energy, EPC, Technology, and Logistics sectors in alignment with Saudi Vision 2030.

Our Mission

To provide high-performance industrial solutions by integrating advanced technology with robust engineering and logistics infrastructure. We are committed to delivering long-term value to our partners through operational excellence, safety, and a deep alignment with the industrial localization goals of the Kingdom of Saudi Arabia and the wider GCC.



Core Values



Customer Focus

Our clients' needs shape our actions — we provide responsive, tailored solutions that create measurable value.



Excellence in Service

We commit to delivering the highest standards of quality, safety, and reliability across all our projects.



Integrity & Transparency

We operate with honesty and fairness, ensuring trust and clarity in every engagement.



Innovation & Improvement

We embrace new technologies and smarter practices, driving efficiency and long-term client satisfaction.



Safety First

We prioritize the safety of our workforce, clients, and communities, embedding safe practices in all operations.



People & Teamwork

We invest in our people, empowering skilled professionals and fostering collaboration to achieve success.



Sustainability & Responsibility

We act responsibly towards the environment and communities, supporting the Kingdom's sustainable growth goals.

Chairman's Message



The industrial and energy sectors of the GCC are navigating a definitive historical turning point. We are witnessing a transition where traditional resource management is being replaced by a sophisticated, technology-driven industrial model. In this new era, the success of our region depends on our ability to bridge high-tier capital with large-scale technical execution—a mission that lies at the very heart of Black Sands Investments (BSI).

Our heritage is deeply rooted in the foundational industries that built this region. From the resilience of our energy and drilling sectors to the stability of our financial and banking institutions, we have always understood that true progress requires a balance of tradition and transformation. BSI was founded as a strategic vehicle to carry this legacy forward, evolving from a service provider into an integrated industrial ecosystem where advanced technology, robust logistics, and financial stability converge.

The Kingdom of Saudi Arabia stands as the cornerstone of this regional evolution. Our commitment to the Kingdom is a central pillar of BSI's global strategy. By aligning our resources with the ambitious objectives of Saudi Vision 2030, we are not merely participating in the market—we are actively investing in the Kingdom's industrial self-reliance.

Our focus remains on driving operational excellence for our primary clients, including Saudi Aramco, SABIC, and PIF, through the deployment of Industry 5.0 solutions and the localization of critical manufacturing chains.

Beyond our borders, BSI acts as a bridge between global innovation and regional necessity. We are committed to fostering a sustainable, technologically advanced industrial future that ensures the GCC remains a global leader in both energy and innovation. We invite our partners and stakeholders to join us as we build the infrastructure of tomorrow, grounded in the values of our past and the limitless potential of our future.

HRH Prince Ahmed bin Hamad Al Hamad
Chairman, Black Sands Investments

رسالة رئيس مجلس الإدارة



تمر القطاعات الصناعية وقطاعات الطاقة في دول مجلس التعاون الخليجي بنقطة تحول تاريخية حاسمة؛ حيث نشهد مرحلة انتقالية يتم فيها استبدال الإدارة التقليدية للموارد بنموذج صناعي متطور تقوده التكنولوجيا. وفي هذا العصر الجديد، يعتمد نجاح منطقتنا على قدرتنا على الربط بين رؤوس الأموال الضخمة والتنفيذ التقني واسع النطاق—وهي المهمة التي تقع في جوهر أهداف شركة "بلاك ساندز للاستثمار" (BSI).

إن إرثنا متجذر بعمق في الصناعات الأساسية التي بنت هذه المنطقة؛ فمن مرونة قطاعات الطاقة والحفر لدينا، إلى استقرار مؤسساتنا المالية والمصرفية، أدركنا دائماً أن التقدم الحقيقي يتطلب توازناً دقيقاً بين الأصالة والتحول. ومن هذا المنطلق، تأسست شركة "بلاك ساندز للاستثمار" كركيزة استراتيجية للمضي قدماً بهذا الإرث، متطورةً من مجرد مزود للخدمات إلى منظومة صناعية متكاملة تلتقي فيها التكنولوجيا المتقدمة والخدمات اللوجستية القوية مع الاستقرار المالي.

وتقف المملكة العربية السعودية كحجر الزاوية في هذا التطور الإقليمي؛ لذا فإن التزامنا تجاه المملكة يمثل ركيزة أساسية في استراتيجية الشركة العالمية. ومن خلال مواءمة مواردنا مع الأهداف الطموحة لرؤية السعودية 2030، فإننا لا نكتفي بمجرد المشاركة في السوق، بل نستثمر بفعالية في تعزيز الاكتفاء الذاتي الصناعي للمملكة.

ويظل تركيزنا منصباً على تحقيق التميز التشغيلي لعملائنا الرئيسيين، بما في ذلك أرامكو السعودية، وسابك، وصندوق الاستثمارات العامة (PIF)، وذلك من خلال تبني حلول "الثورة الصناعية الخامسة" (Industry 5.0) وتوطين سلاسل التصنيع الحيوية.

وخلف حدودنا، تعمل شركة "بلاك ساندز للاستثمار" كجسر يربط بين الابتكار العالمي والاحتياجات الإقليمية. نحن ملتزمون بتعزيز مستقبل صناعي مستدام ومتقدم تكنولوجياً يضمن بقاء دول مجلس التعاون الخليجي في طليعة القادة العالميين في مجالي الطاقة والابتكار. إننا ندعو شركاءنا وأصحاب المصلحة للانضمام إلينا في بناء البنية التحتية للغد، مستنديين إلى قيم ماضيها والإمكانات اللامحدودة لمستقبلنا.

صاحب السمو الملكي الأمير أحمد بن حمد آل حمد
رئيس مجلس إدارة شركة بلاك ساندز للاستثمار

Industries We Serve

Oil & Gas Exploration & Production

Onshore and offshore operators: drilling equipment supply, rig components, AI-driven predictive maintenance, shutdown/turnaround support, and full HSE compliance. We help clients achieve safe, reliable, and cost-effective operations in critical energy environments.

Petrochemicals & Refining

Downstream plants, refineries, and petrochemical complexes: EPC execution, plant upgrades, asset integrity, and technology integration. Our expertise supports efficiency, safety, and productivity in high-demand processing facilities.

EPC & Infrastructure Projects

Energy, utilities, and industrial infrastructure projects: civil, mechanical, and electrical works, fabrication, and commissioning. We deliver turnkey project execution with a focus on quality, compliance, and long-term performance.

Industrial Manufacturing

Trailer and head truck production, heavy equipment fabrication, spare parts, and engineered components. We bring advanced manufacturing capabilities supported by leading OEM partnerships and modern facilities.

Power & Utilities

Power generation plants, water desalination, and utilities: mechanical and electrical works, predictive maintenance, and digital monitoring systems. We ensure resilient, efficient, and sustainable utility operations that support national infrastructure.

AI & Advanced Technologies

Artificial intelligence, predictive maintenance, and automation for Oil & Gas, EPC, and utility sectors. We deliver innovative technologies that enhance safety, optimize performance, and ensure industries remain resilient and competitive across the GCC.

Industrial Logistics & Mobility

Fleet distribution, and heavy transport solutions for Oil & Gas, manufacturing, and infrastructure sectors. We provide safe, efficient, and cost-effective logistics that strengthen regional supply chains and support large-scale industrial operations.

Mining & Metals

Mining operations and metal industries: heavy equipment support, logistics, EPC services, and technology-driven optimization. We provide integrated solutions that enhance productivity, improve safety, and ensure reliable performance in resource-intensive environments.

Renewable Energy & Sustainability

Solar, wind, and sustainable energy projects: EPC execution, grid integration, and smart energy systems. We deliver innovative renewable solutions that support national sustainability goals and the transition to cleaner energy across the GCC.

Advanced Solar Energy Technology Systems

High-efficiency PV, hybrid storage, and grid-interactive solutions engineered for GCC climates and utility standards.

EV Commercial Transport Vehicles

Electric trucks and fleet solutions, charging infrastructure, and lifecycle support for lower-emission industrial mobility.

Ports, Terminals & Maritime

Marine EPC, quay and yard equipment support (RTGs/STS), offshore logistics, corrosion protection, and IMO-compliant HSE.



Our Facilities

Black Sands Investments (BSI) operates from a fully integrated industrial facility strategically located in Dammam & Riyadh, KSA. Designed to support our diverse business lines, the facility combines manufacturing, warehousing, and yard operations, enabling efficiency, quality, and scalability.

Key Features:

- **Manufacturing Workshops** – Equipped for fabrication, machining, and assembly of drilling rigs and its associated equipment, parts & consumables for offshore / onshore, industrial trailers, heavy trucks, and engineered components.
- **Logistics Yard** – Dedicated space for equipment storage, mobilization, and heavy vehicle operations.
- **Warehouse** – Stocking of spare parts, consumables, and critical inventory for Oil & Gas and EPC projects.
- **Technology & Control Center** – Space allocated for AI, automation, and monitoring systems to support advanced industrial applications.
- **Office Complex** – Housing management, engineering, and operations teams, ensuring seamless coordination across all divisions.

Our Dammam base positions BSI to serve both KSA and the wider GCC, offering proximity to major clients, ports, and industrial zones. The facility reflects our commitment to building a sustainable, future-ready industrial hub that supports regional growth and self-sufficiency.

Our JV Partner

INTLEF Group of Companies - China



BSI operates a high-level strategic joint venture with INTLEF Group, an international conglomerate headquartered in the global financial hub of Shanghai, China. This partnership merges BSI's regional influence and strategic alignment with Saudi Vision 2030 with INTLEF's world-class R&D, heavy industrial manufacturing, and Industry 5.0 technological platforms. By combining the financial and strategic leadership of HRH Prince Ahmed bin Hamad Al Hamad with INTLEF's manufacturing brilliance, BSI stands as a unique entity capable of delivering the full industrial spectrum—from the production of renewable energy solutions to the deployment of AI-integrated drilling fleets.

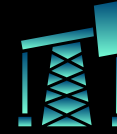
INTLEF provides BSI with a massive supply chain backbone through three specialized manufacturing bases in China: Shanghai (R&D and Automated Controls), Hebei (Well Control and BOPs), and the Yangtze River Delta (Rig Components). Supported by eight global service stations and five specialized business units, this infrastructure ensures BSI maintains 24/7 technical support and rapid mobilization for mission-critical GCC projects.

Through this partnership, BSI delivers advanced Oil & Gas solutions to Saudi Aramco and major drilling contractors. Our portfolio features AI-driven rig components—including automated pipe handling and iron roughnecks—that enhance safety and efficiency. We also manufacture specialized electric energy storage workover rigs (AI-EMS-VFD) engineered specifically for the harsh desert environments of the Empty Quarter and offshore applications.

BSI extends this expertise into comprehensive plant maintenance and multidisciplinary EPC works. With capability to manage complex facility lifecycles for Aramco, SABIC and PIF-owned entities, providing specialized shutdown services, mechanical fabrication, and advanced Electrical & Instrumentation (E&I). Our capabilities include the installation of SCADA and Distributed Control Systems (DCS) to ensure seamless operational automation. In support of the Saudi Green Initiative, BSI in venture with INTLEF serves as an OEM manufacturer and EPC contractor for renewable energy, that specialize in utility-scale solar trackers, wind turbine components, and Green Hydrogen infrastructure.

The core value of this venture lies in In-Country Value (ICV) and industrial localization. BSI is building a domestic ecosystem in Saudi Arabia for supply, commissioning, and after-market services. By establishing a regional hub for industrial manufacturing and supply, we ensure the successful transfer of global intellectual property to the Kingdom, fostering a self-reliant and technologically advanced Saudi industrial sector.

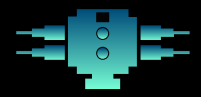
BSI's Business Lines



Well Engineering



Industrial Consumables



Oil & Gas Products



Civil Works



Electrical & Instrumentation



Mechanical Works



Plant Maintenance



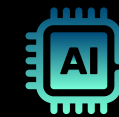
Renewable Energy



Industrial Gas Supply



IT & Network



Artificial Intelligence



Heavy Haulage



Human Resource



Heavy Equipment Rental



Industrial Catering

Our Services

Energy & Industrial Upstream

- **Well Engineering:** Full lifecycle well design and specialized field supervision. Includes Integrated Project Management (IPM), production support, and specialized geological studies for drilling operations.
- **Oil & Gas Products:** Provision of specialized upstream equipment such as Blowout Preventers (BOPs), Wellhead systems, and Artificial Lift Systems (ESP, Gas Lift, and Rod Pumps).
- **Industrial Consumables:** Supply of mission-critical hardware including high-spec valves, fittings, gaskets, and flanges. Focuses on MRO (Maintenance, Repair, and Overhaul) supplies and API-certified industrial tools.
- **Renewable Energy:** Utility-scale Solar and Onshore Wind EPC services. Includes Green Hydrogen electrolysis project development, grid connection, and ESG-compliant carbon footprint assessments.
- **Industrial Gas Supply:** Strategic supply chain for LPG, LNG, and petrochemical feedstocks such as Ethane, Methanol, and Sulfur. Leverages a global corridor for terminal-to-facility gas distribution.

EPC & Maintenance

- **Plant Maintenance:** Comprehensive Shutdown and Turnaround management (S&T). Specialized in pressure vessel maintenance, heat exchanger overhauls, and Non-Destructive Testing (NDT) services.
- **Civil Works:** Large-scale infrastructure development including roads, earthworks, and structural concrete. Specialized in TCF (Temporary Construction Facility) design, build, and site preparation.
- **Mechanical Works:** High-pressure piping fabrication, HVAC system installation, and heavy equipment hydraulics. Focuses on steel fabrication, erection, and rotating equipment alignment.
- **Electrical & Instrumentation:** Installation of High-Voltage (HV/LV) power systems, SCADA grid integration, and Distributed Control Systems (DCS). Includes field instrumentation and measurement device calibration.

Technology & Intelligence

- **Artificial Intelligence:** Deployment of predictive analytics for equipment failure and AI-driven Computer Vision for HSE monitoring. Includes automated drilling platforms and AI-integrated cybersecurity protocols.
- **IT & Network:** Enterprise infrastructure including LAN/WAN, FTTH deployment, and industrial-grade cybersecurity (OT/IT). Specialized in remote WiFi/P2P solutions for remote desert sites and TCFs.

Logistics & Support Services

- **Heavy Equipment Rental:** Short and long-term leasing of civil and industrial support machinery. Includes power utility equipment, earthmoving fleets, and different types of cranes (Mobile / RT / Tower).
- **Heavy Haulage:** Specialized transport solutions for oversized industrial loads and Rig Moves. Includes high-capacity logistics management using flatbed, lowbed, prime movers and heavy-duty transport fleets.
- **Human Resource:** Specialized manpower supply and mobilization for skilled and unskilled roles.
- **Industrial Catering:** Full-scale hospitality and food service management for remote TCFs and rigs. Focuses on high-volume, nutritionally balanced meal programs compliant with international health and safety standards.

Value-Added Services

Beyond Services, Delivering Real Value to Our Clients.



Integrated Operating Model

Seamless coordination of all services under one umbrella.

→ Reduces client overheads, improves efficiency, and provides a single accountability point.



Asset Management Approach

Lifecycle planning, asset tagging, and digital monitoring.

→ Maximizes uptime, reduces replacement costs, and extends equipment life.



Technology & Digital Tools

AI platforms, sensors, and real-time dashboards.

→ Ensures performance visibility, faster reporting, and transparent compliance.



Risk & Compliance Management

Adherence to International standards and codes.

→ Guarantees zero non-compliance and smooth regulatory approvals.



Cost Efficiency & Sustainability

Energy savings, waste reduction, and predictive maintenance.

→ Cuts OPEX while aligning with GCC Vision sustainability goals.



Skilled Workforce & Rapid Mobilization

Engineers, technicians, and certified manpower ready for deployment.

→ Ensures quick project mobilization and uninterrupted service delivery.

QHSE Policy

BSI is committed to achieving and maintaining excellence in all aspects of our manufacturing, engineering, construction and our other services. Our dedication to quality, health, safety, and environmental stewardship is integral to our business ethos and is reflected in our integrated QHSE management systems.

- **Quality Assurance:** Consistently delivering projects that meet or exceed the rigorous standards of our clients, as well as international quality benchmarks.
- **Health and Safety:** Providing a safe workplace by implementing proactive safety and occupational health measures that prevent workplace incidents and injuries.
- **Environmental Responsibility:** Minimizing environmental impact through sustainable practices and compliance with environmental regulations.
- **Continuous Improvement:** Employing a systematic approach to QHSE management by setting, reviewing, and refining objectives to achieve best-in-class performance.

Commitment to Standards

BSI maintains alignment with international standards to ensure continuous improvement of our QHSE practices. We adhere to:

- ISO 9001:2015
- ISO 14001:2015
- ISO 45001:2018

Operational Integrity and Compliance

We operate in compliance with all relevant legal and regulatory requirements and strive to incorporate best practices into our operations:

- **Risk Management:** Identifying and managing potential risks in all project phases to ensure safety and compliance.
- **Resource Efficiency:** Optimizing the use of resources across all operations to enhance efficiency and sustainability.
- **Stakeholder Engagement:** Engaging with clients, contractors, and communities to enhance QHSE awareness and performance.

Continual Improvement and Training

BSI is committed to fostering a culture of continual improvement and learning:

- **Employee Development:** Providing ongoing training and development opportunities to ensure our team is skilled in the latest QHSE practices.
- **Performance Monitoring:** Regularly evaluating our processes through audits and assessments to identify areas for improvement.
- **Innovation in Practices:** Encouraging innovative approaches to enhance QHSE outcomes across our projects.

This QHSE policy highlights BSI's commitment to operational excellence, safeguarding the well-being of our employees, our client's, and preserving the environment. It is the responsibility of every member of our organization to understand, promote, and implement this policy in their daily activities and across all operations.



Corporate Governance

At BSI, our Code of Conduct defines the principles that guide the way we do business. It ensures that our relationships with clients, employees, suppliers, and stakeholders are conducted with transparency, fairness, and accountability.

Integrity

We operate with honesty and transparency in all interactions, ensuring that every action reflects our commitment to ethical business practices.

Compliance

We adhere strictly to all local laws, regulations, and client-specific requirements, including International standards. Anti-bribery, anti-corruption, and zero tolerance for unethical behavior are central to our governance.

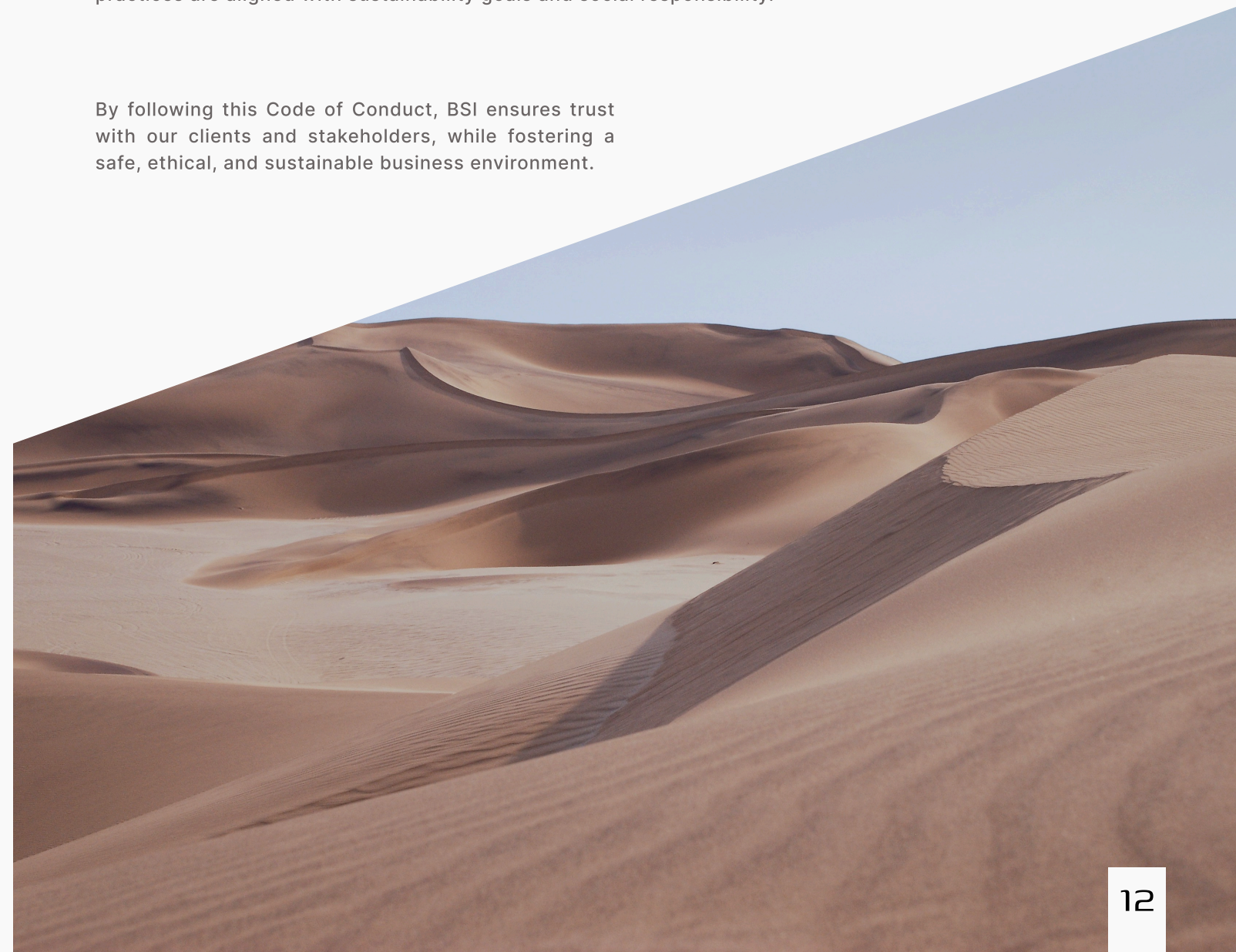
Fairness & Respect

We treat our employees, subcontractors, and partners with fairness and respect, upholding equal opportunity and diversity in our workforce.

Responsibility

We are accountable for the impact of our operations on society and the environment. Our business practices are aligned with sustainability goals and social responsibility.

By following this Code of Conduct, BSI ensures trust with our clients and stakeholders, while fostering a safe, ethical, and sustainable business environment.



“ Maintaining Excellence,
Building Futures.”



Contact Us



+973 3940 6660



www.blacksandsinvestments.com



info@blacksandsinvestments.com



Dammam | Shanghai

